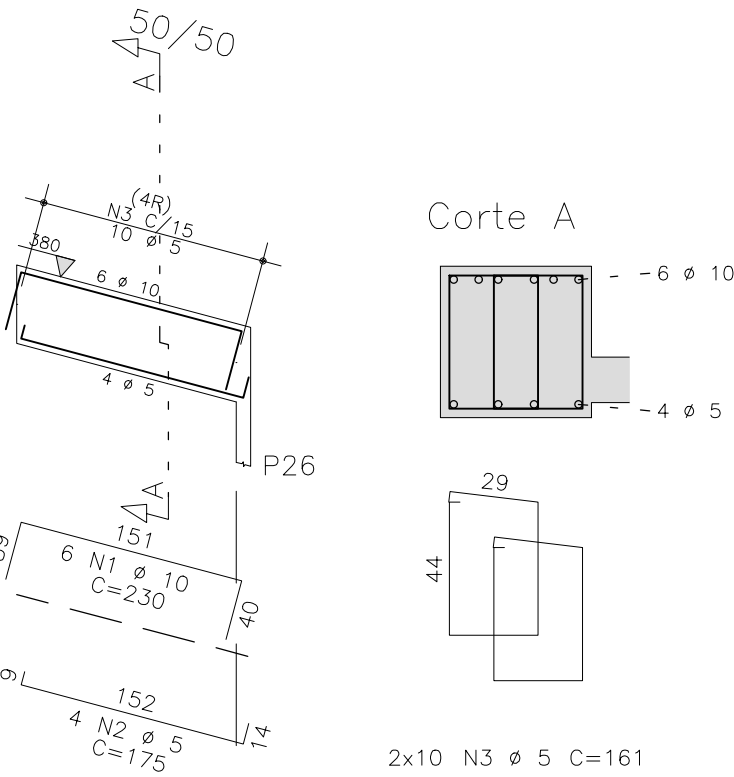
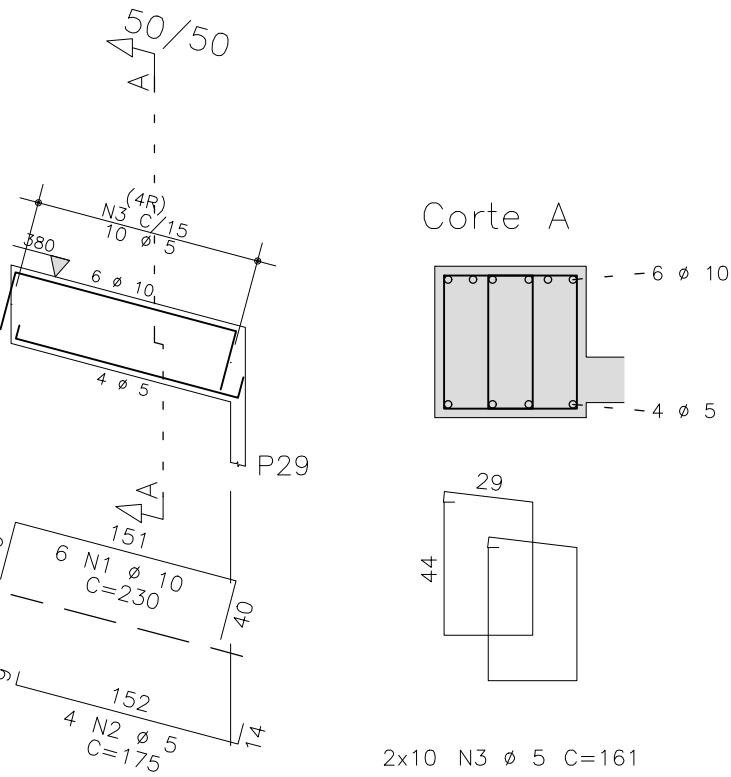


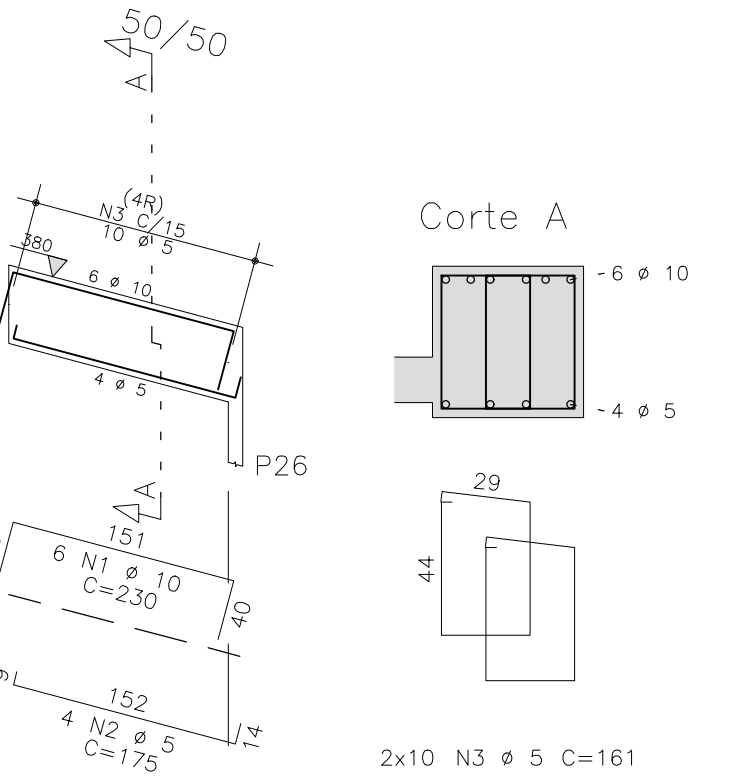
VR4



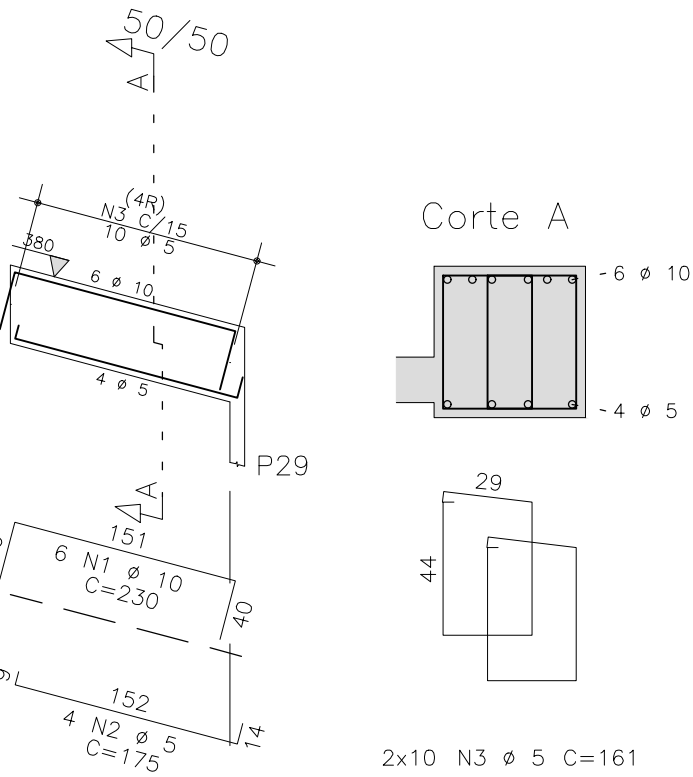
VR5



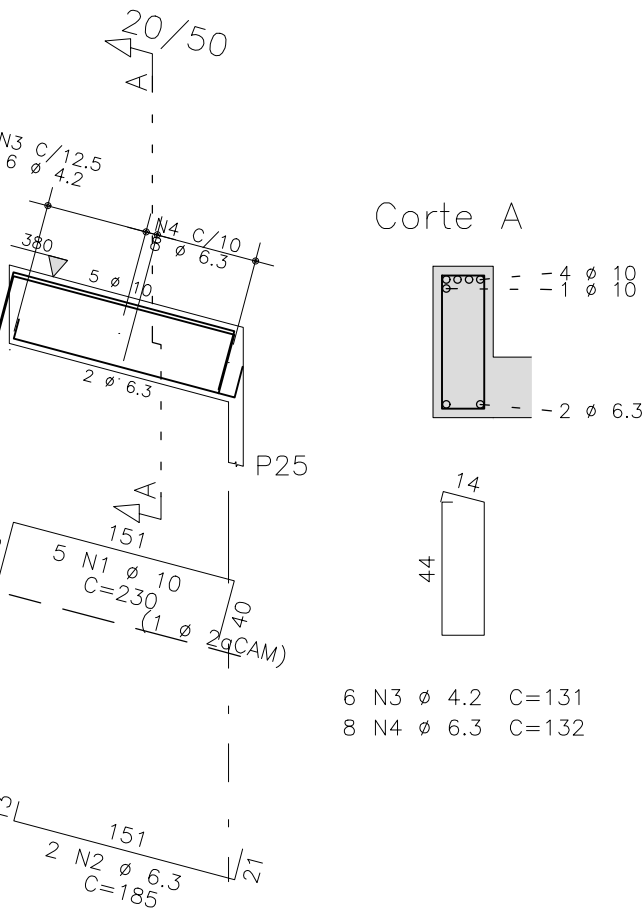
VR1



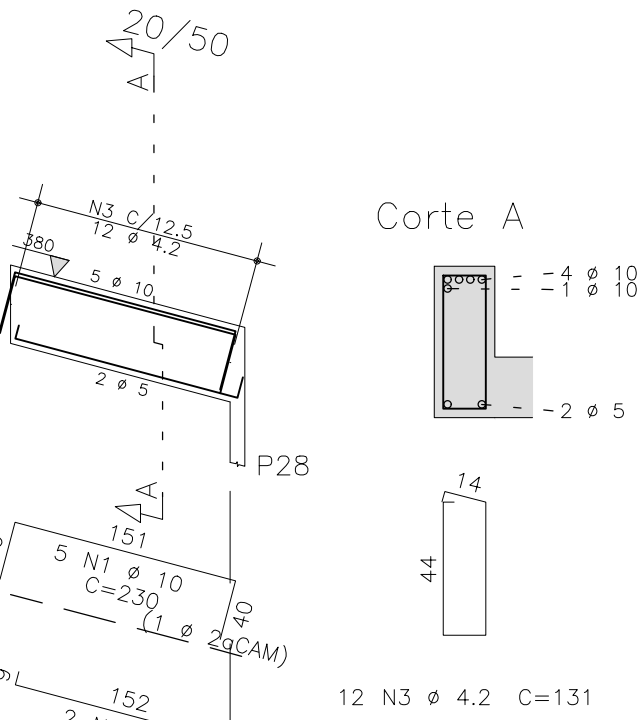
VR10



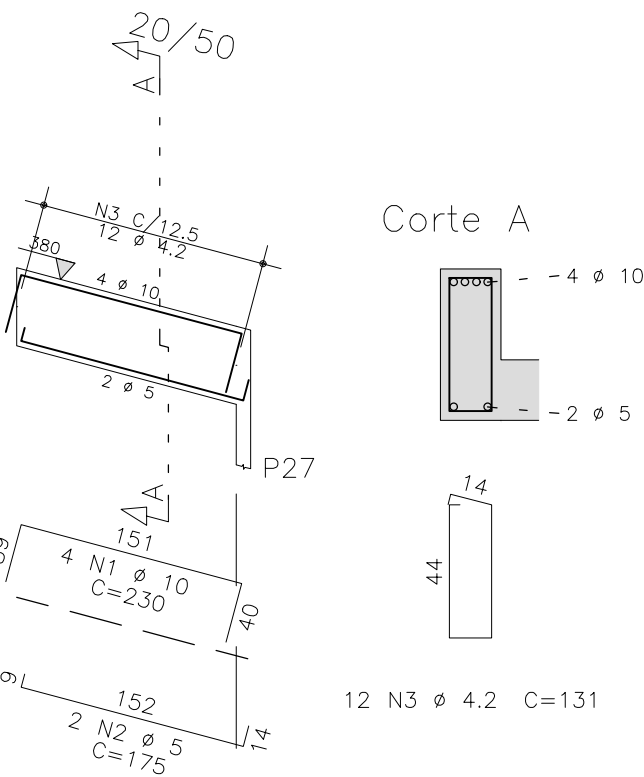
VR2



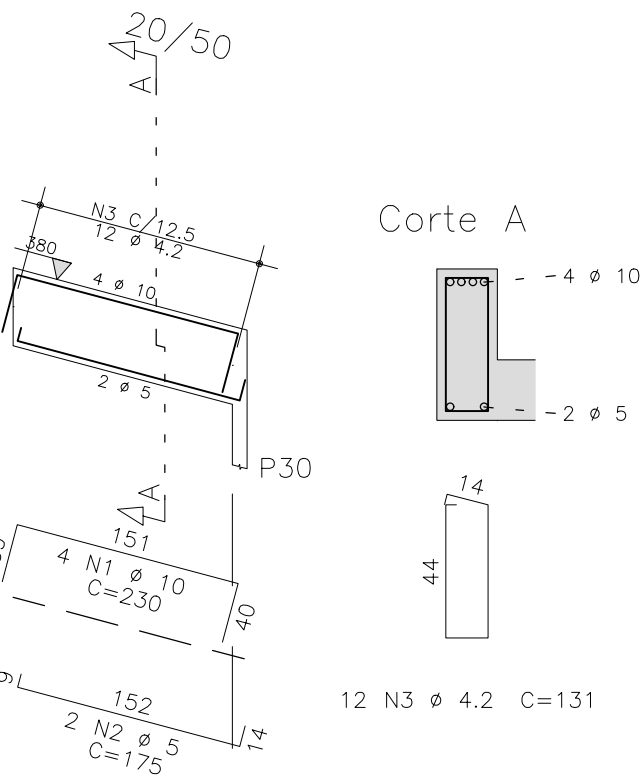
VR9



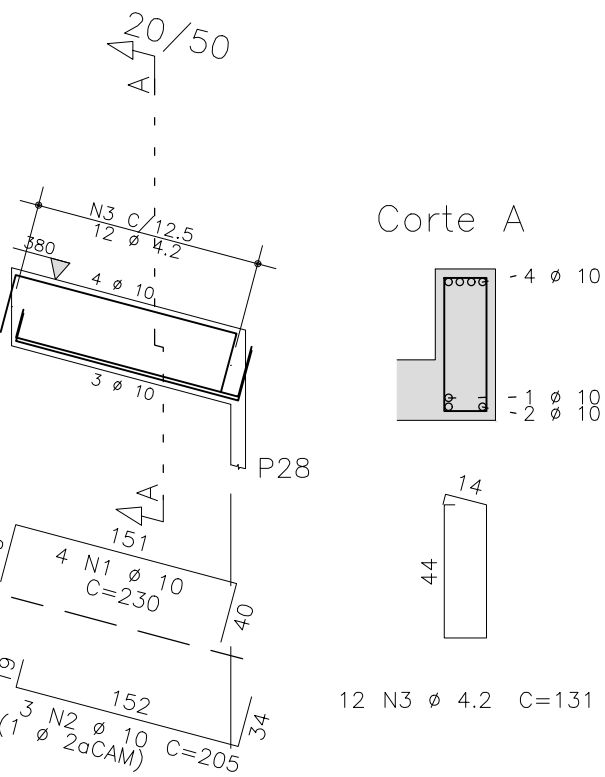
VR8



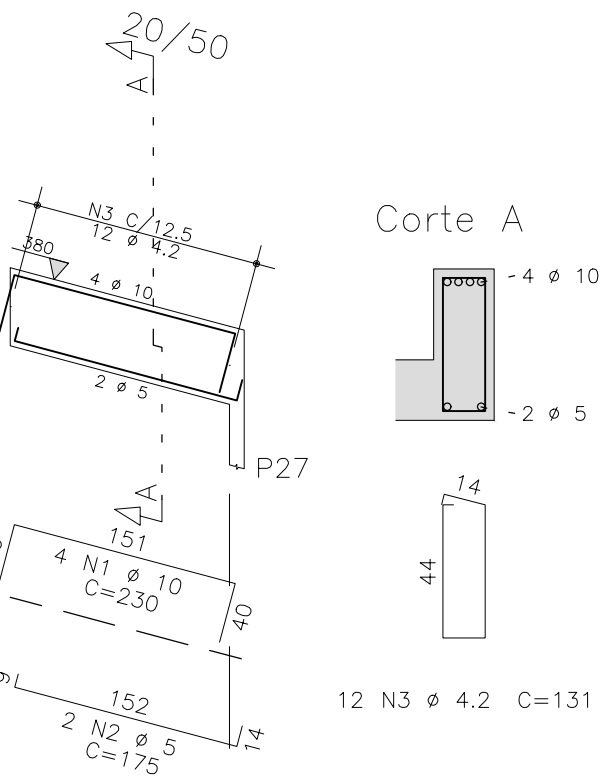
VR11



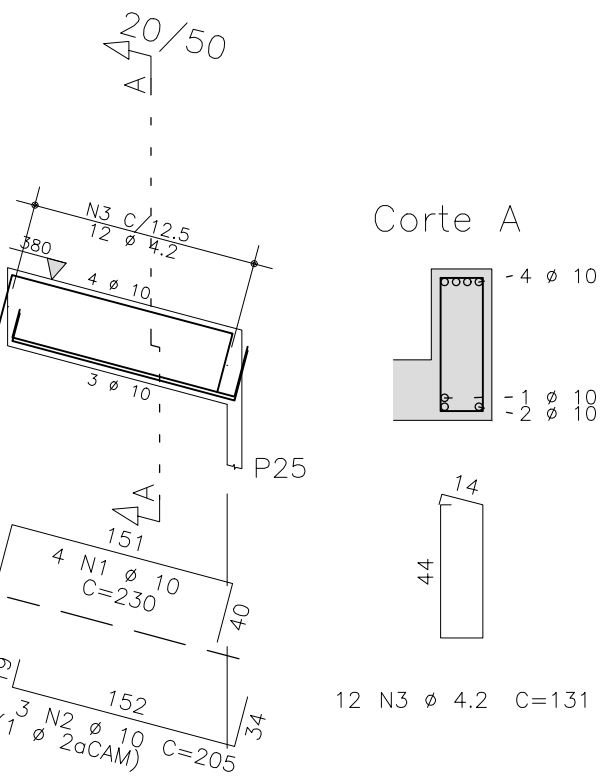
VR6



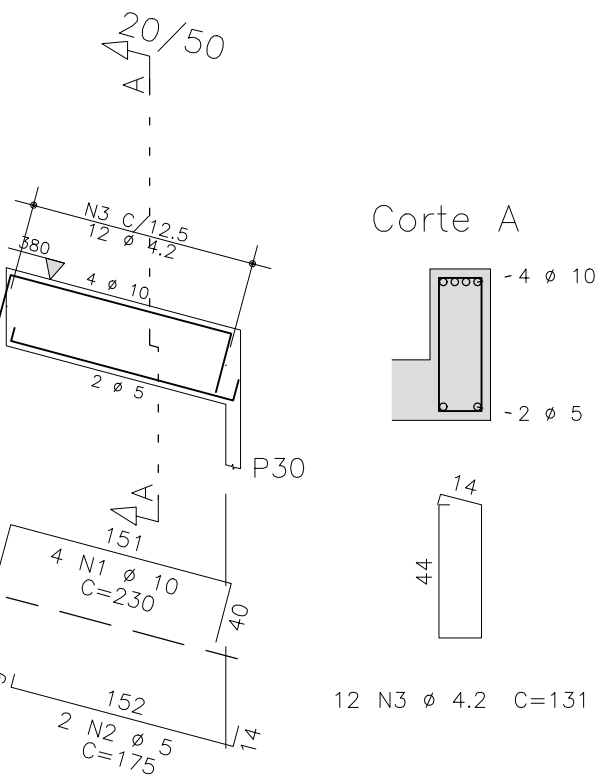
VR7



VR3




VR12



	AÇO	POS	BIT (mm)	QUANT	COMPRIMENTO	
					UNIT (cm)	TOTAL (cm)
VR1	50A	1	10	6	230	1380
	60B	2	5	4	175	700
	60B	3	5	20	161	3220
VR2	50A	1	10	5	230	1150
	50A	2	6.3	2	185	370
	60B	3	4.2	6	131	786
VR3	50A	1	10	4	230	920
	50A	2	10	3	205	615
	60B	3	4.2	12	131	1572
VR4	50A	1	10	6	230	1380
	60B	2	5	4	175	700
	60B	3	5	20	161	3220
VR5	50A	1	10	6	230	1380
	60B	2	5	4	175	700
	60B	3	5	20	161	3220
VR6	50A	1	10	4	230	920
	50A	2	10	3	205	615
	60B	3	4.2	12	131	1572
VR7	50A	1	10	4	230	920
	60B	2	5	2	175	350
	60B	3	4.2	12	131	1572
VR8	50A	1	10	4	230	920
	60B	2	5	2	175	350
	60B	3	4.2	12	131	1572
VR9	50A	1	10	5	230	1150
	60B	2	5	2	175	350
	60B	3	4.2	12	131	1572
VR10	50A	1	10	6	230	1380
	60B	2	5	4	175	700
	60B	3	5	20	161	3220
VR11	50A	1	10	4	230	920
	60B	2	5	2	175	350
	60B	3	4.2	12	131	1572
VR12	50A	1	10	4	230	920
	60B	2	5	2	175	350
	60B	3	4.2	12	131	1572

RESUMO AÇO CA 50-60			
AÇO	BIT (mm)	COMPR (m)	PESO (kg)
60B	4.2	118	13
60B	5	174	27
50A	6.3	14	3
50A	10	146	90
Peso Total		60B =	40 kg
Peso Total		50A =	93 kg

fck 250. kg/cm2 – C25



Schuring & Schuring Ltda.  
Escritório Técnico B.E.SCHURING – Projetos de Engenharia  
Av. XV de Novembro, 489 – Porto 2o. Andar – Cuiabá MT  
Fone:(065) 321 9959 – Fax:(065) 623 5066 – Email – schuring@terra.com.br

PROJETO:

PROPRIETÁRIO:  
PREFEITURA MUNICIPAL DE VÁRZEA GRANDE

RESP. TEC. EXECUÇÃO:  
—

OBRA:  
PARQUE BERNECK–PARQUE AQUATICO

END.:  
Av. Julio Campos, SN – Bairro Água Vermelha  
Várzea Grande MT

ASSUNTO:  
COBERTURA  
DET ARM VIGAS


PECAS DETALHADAS  
VR1 / VR2 / VR3 / VR4 / VR5 / VR6 / VR7  
VR8 / VR9 / VR10 / VR11 / VR12

FCR:  
250  
ESCALA:  
1:50

DIREITOS AUTORES RESERVADOS  
VERIFICAR MEDIDAS NA OBRA

DATA:  
18/05/2020

FOLHA No.  
12

AUTORES DO PROJETO:  
  
André Luiz Schuring  
Eng. Civil - CREA 8697/D-MT